

Decentralised and semi-centralised wastewater treatment plants as an optimization approach already in the early project stage

Cairo Water Week, GWP-Atlantis Workshop

“Sewage treatment plants as a resource
for water, energy and nutrients”

25. Oktober 2021

Thomas Gester

Head of Special Projects
and Networking

ATB WATER GmbH

t.gester@atbwater.com

Ahmed Haggag

Director Sales & Business Development
Middle East and Afrika

ATB WATER GmbH

a.haggag@atbwater.com



Member of
**German Water
Partnership**

For a world with clean water



The company
**ATB WATER
GmbH**

ATB WATER GmbH





Member of
**German Water
Partnership**

For a world with clean water



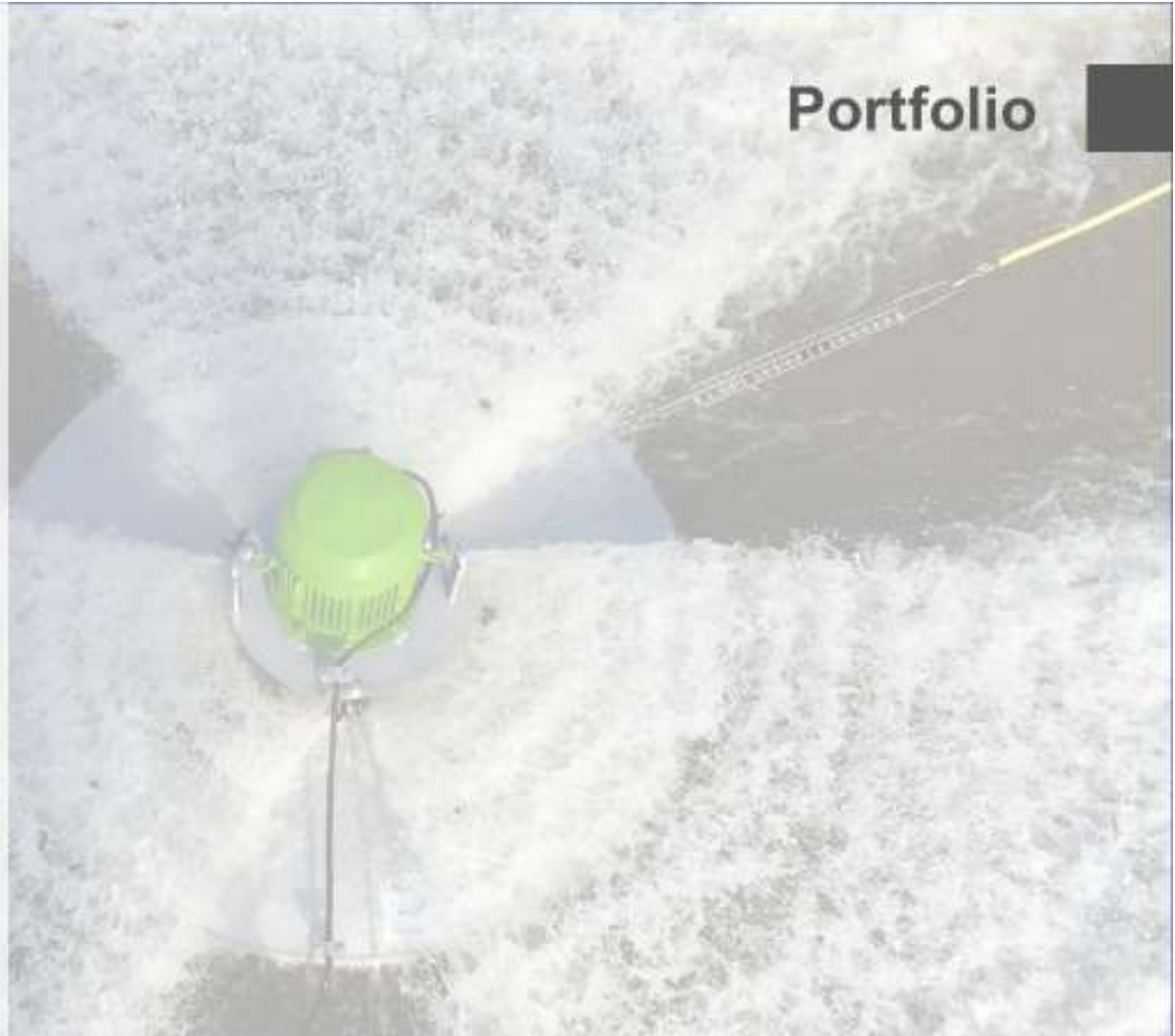
Development / production /
distribution of:

- Fully biological small and
small scale wastewater
treatment systems
- Technical equipment for
sewage technology
- Multi-chamber tanks and
collecting pits made of
precast concrete

ATBSHOP with accessories
and spare parts

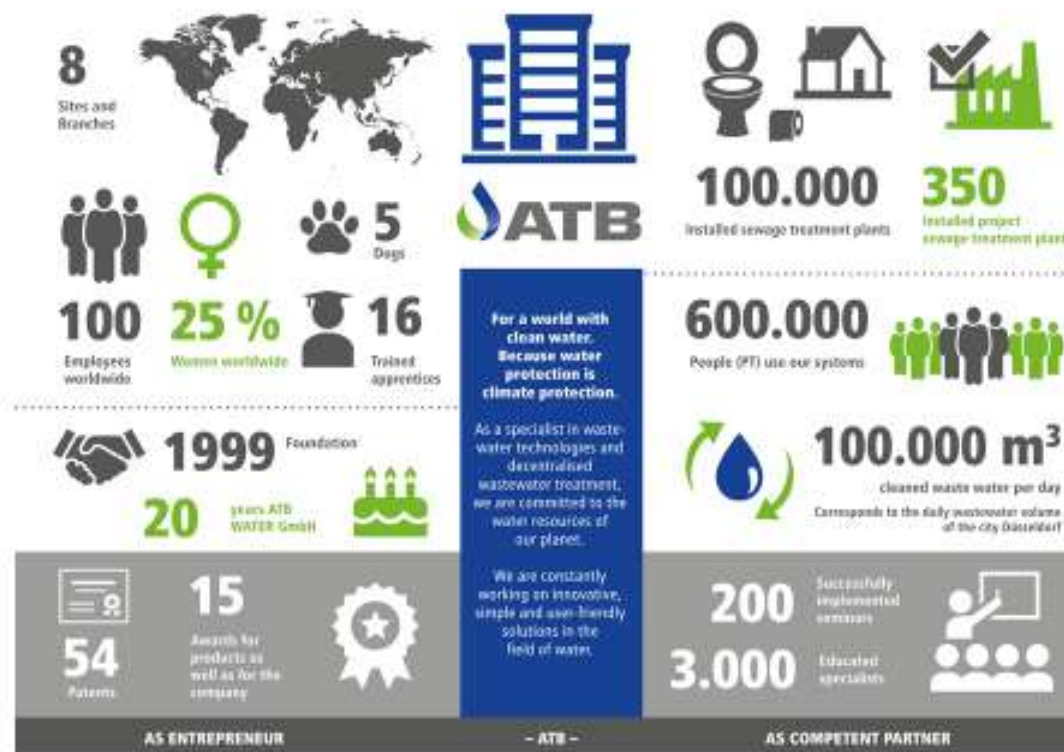
Service with maintenance
and laboratory

Portfolio



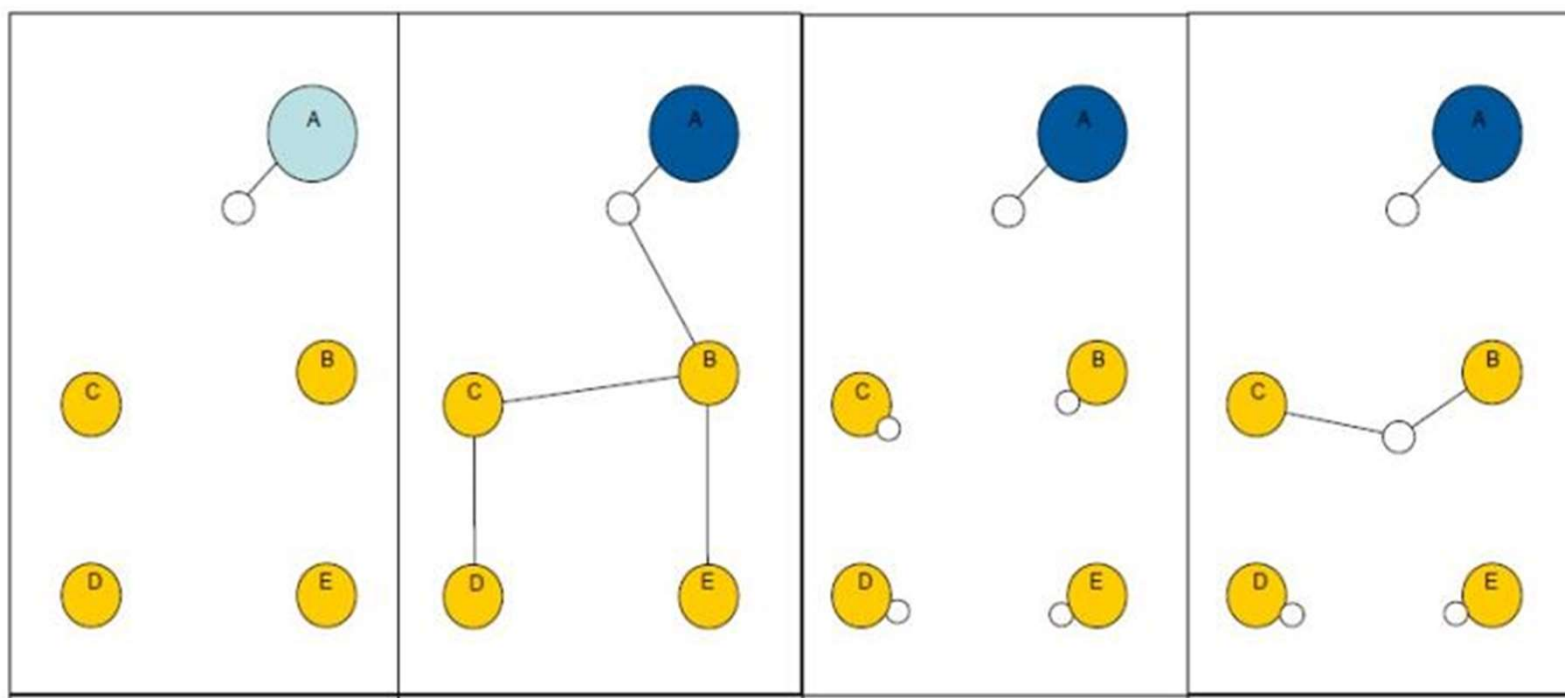


ATB at a glance



Decentralized Wastewater Systems

Central – Decentral - Semicentral



Initial Situation

Centralized Solution

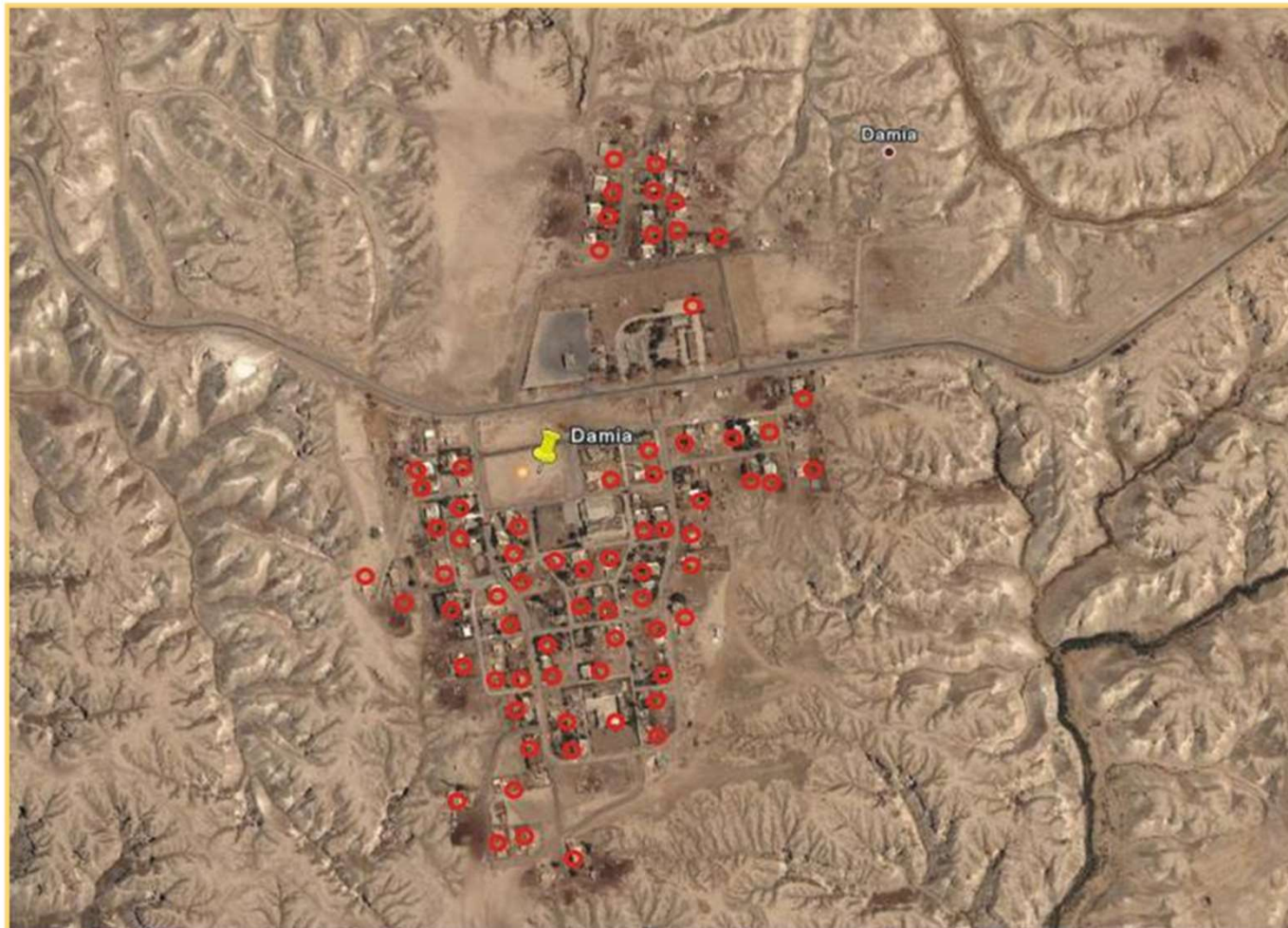
Decentralized
Solution
4 - 50 EW

Semi-centralized
Solution
50 - 500 EW
500 - 5.000 EW



Decentralized Wastewater Systems

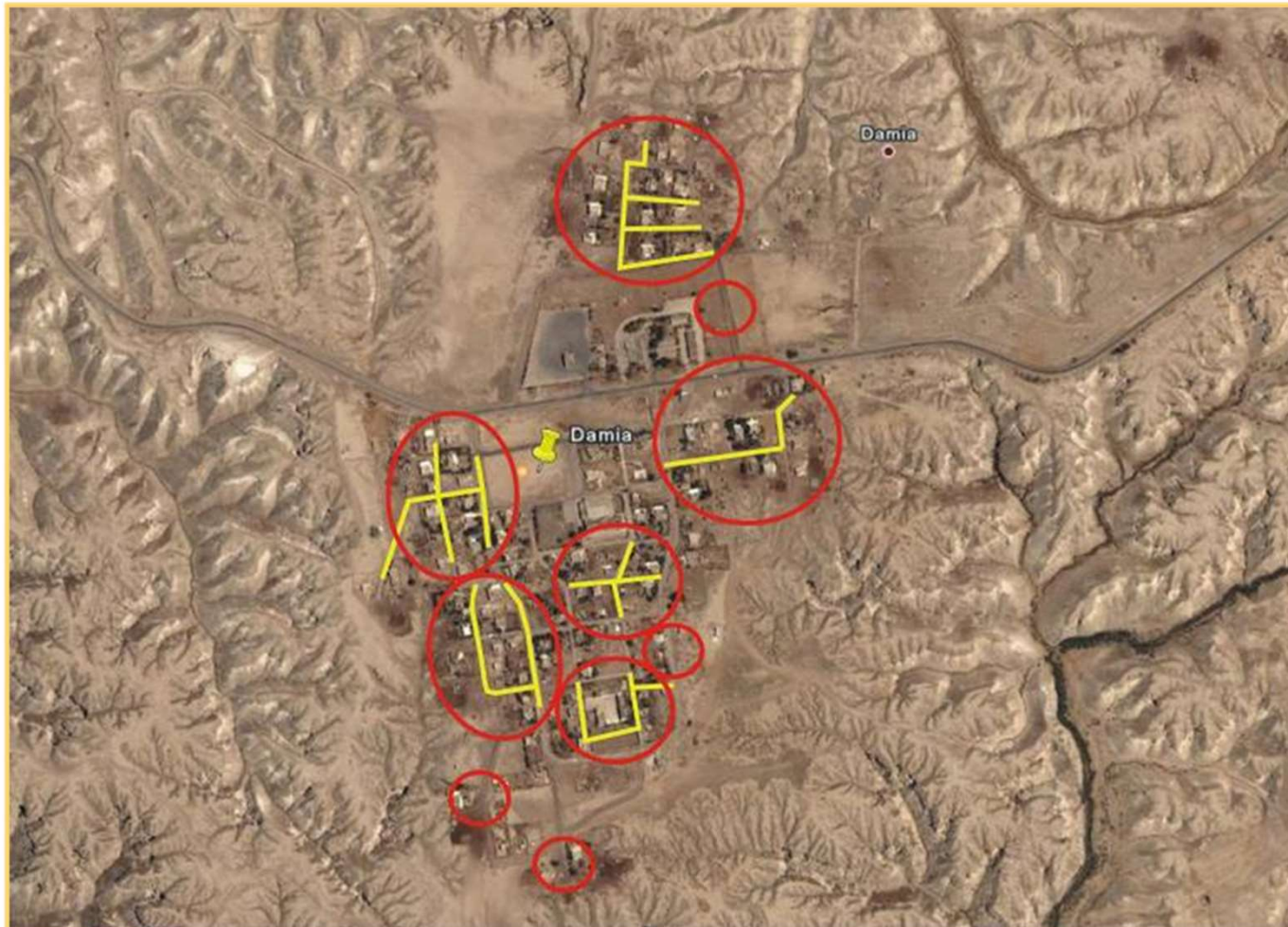
Onsite system: One house, one WWTP





Decentralized Wastewater Systems

Cluster of WWTP: Parts of communities





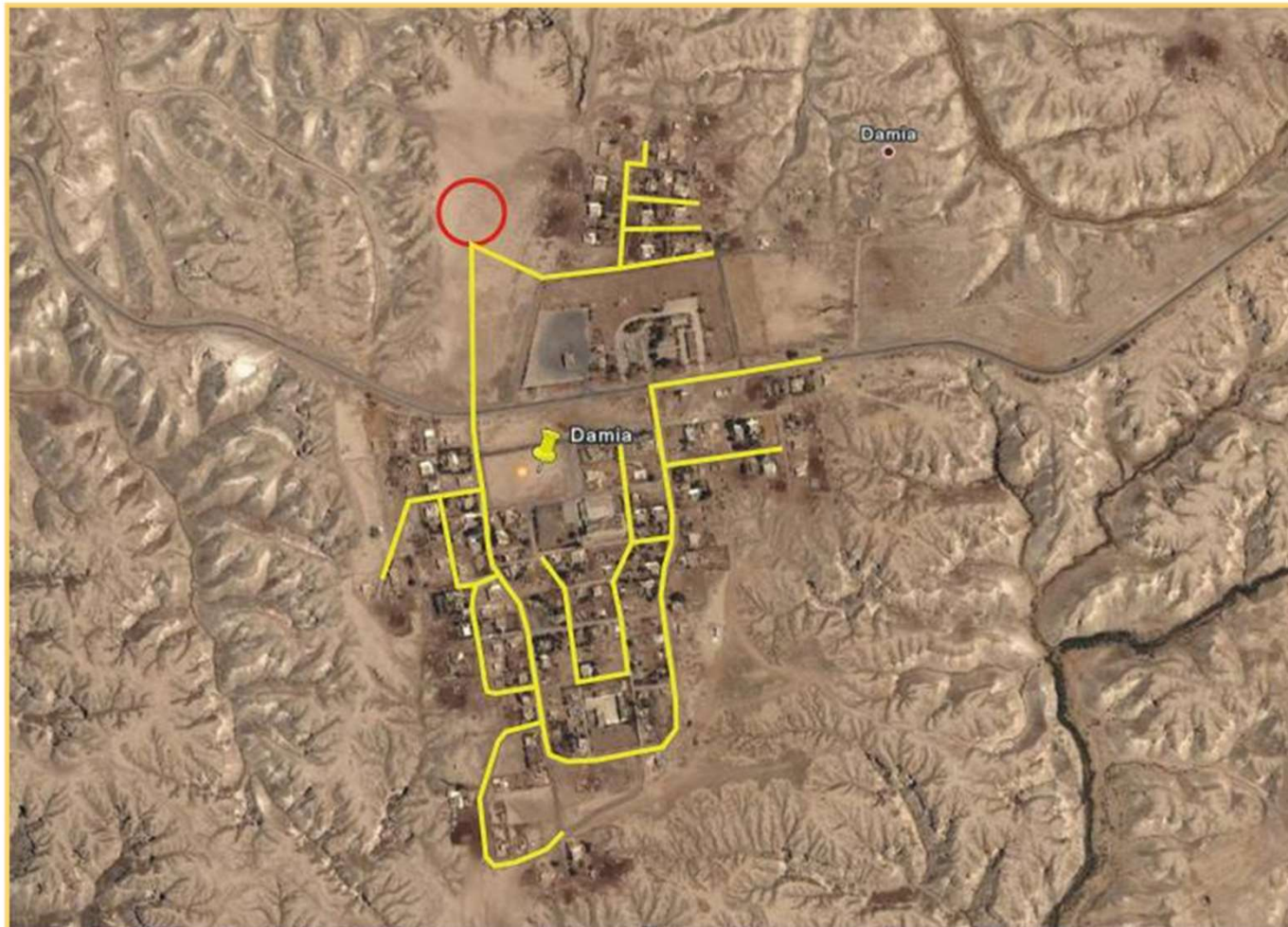
Member of
**German Water
Partnership**

For a world with clean water



Decentralized Wastewater Systems

One small community, one WWTP



Treatment plant	On-site	cluster	Semi central
Scale of service	Individual building or property	Neighborhood portion of a community	Small community
Typical population equivalent	4 - 50	50 - 500	500 – 5.000

Approximate
Amount of water
[m³ / day]
with 200 l / PE x d

1–10

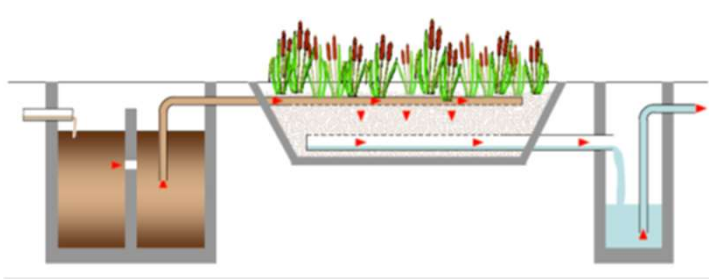
10–100

100–1,000

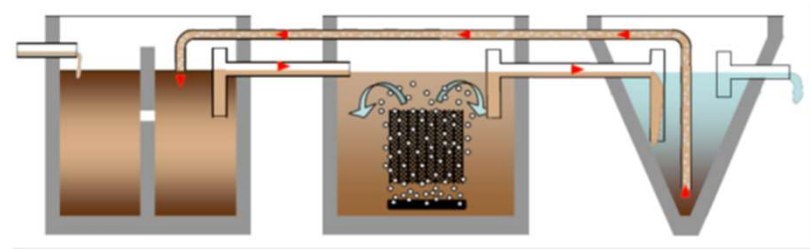
Advantages of semicentral and decentral solutions

- Individual adaption to local circumstances
- Moderate interference with local given structures
- Lower and more manageable investment costs (CAPEX)
- Lower follow-up costs due to missing or very reduced (collection and distribution) network structures (OPEX)
- Simplified integration of the affected group of persons
- Increasing environmental awareness due to the short distance to the project
- Decentralised treatment increases the rate of reuse (irrigation, toilet flushing, etc) due to simpler implementation and decreases the individual water consumption
- Nutrient rich water may lead to a reduction of fertiliser

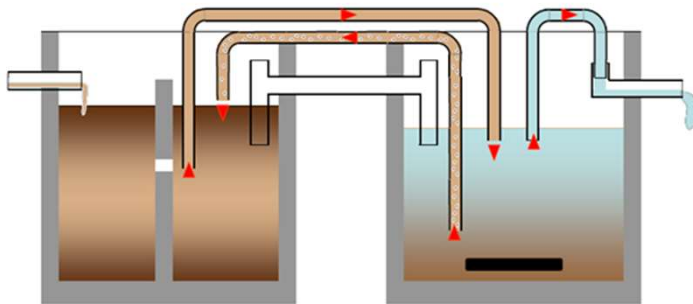
Comparison of processes



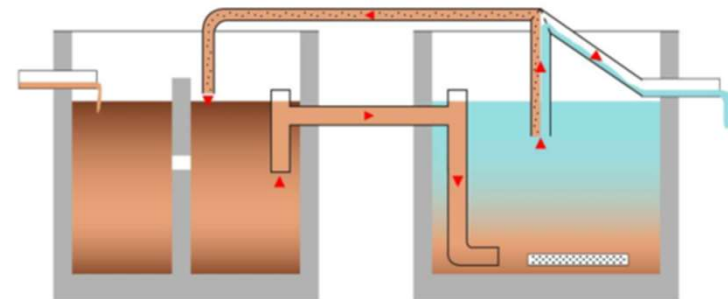
Gravity flow, no control / regulation



Gravity flow with control / regulation



Backwater / retention with fixed cycles
Time controlled SBR



Backwater / retention with open cycles
Water level / volume controlled SBR

Advantages of SBR treatment processes

(compared with gravity flow systems)

- Less footprint, flexible geometries of tanks
- Wide range of process controlling and operating
- Therefore adaptable to different conditions on site
e.g. depending on daily, weekly, monthly, season influences
- Treatment of a wide range of wastewaters
of different applications such as:
residential buildings, hotels, restaurants
leisure and tourism facilities, camping sites,
food production / handling, etc.
- The treated wastewater is evacuated in batches,
an ideal condition for subsequent equipment for
disinfection and/or reuse/irrigation

(**SBR** = **S**equences **B**atch **R**actor)

Advantages of ATB's SBR wastewater treatment plants

- Individual problem solutions based on standardised components.
> Modular systems.
- Therefore short delivery / realisation times.
- Simple intuitive operation by the operator
after introduction / instruction
> a specialist company is only required for regular maintenance and
possible repairs



Member of
**German Water
Partnership**

For a world with clean water



Please see the following video animation.

For more Information:



ATB WATER GmbH

Südstraße 2 | D-32457 Porta Westfalica

Fon: +49 5731 30230-0 | Fax: +49 5731 30230-0

E-Mail: info@atbwater.com | Website: www.atbwater.com

Social Media: [facebook](#) | [instagram](#) | [youtube](#) | [Linkedin](#) | [twitter](#)

**The specialist for SBR treatment plants up to 10,000 PT (~ 2,000 m³/day)
and equipment & solutions even for bigger sizes**

Thomas Gester

E-Mail: t.gester@atbwater.com

Mobile: +49 160 97877472

Ahmed Haggag

E-Mail: a.haggag@atbwater.com

Mobile: +2 01234500284